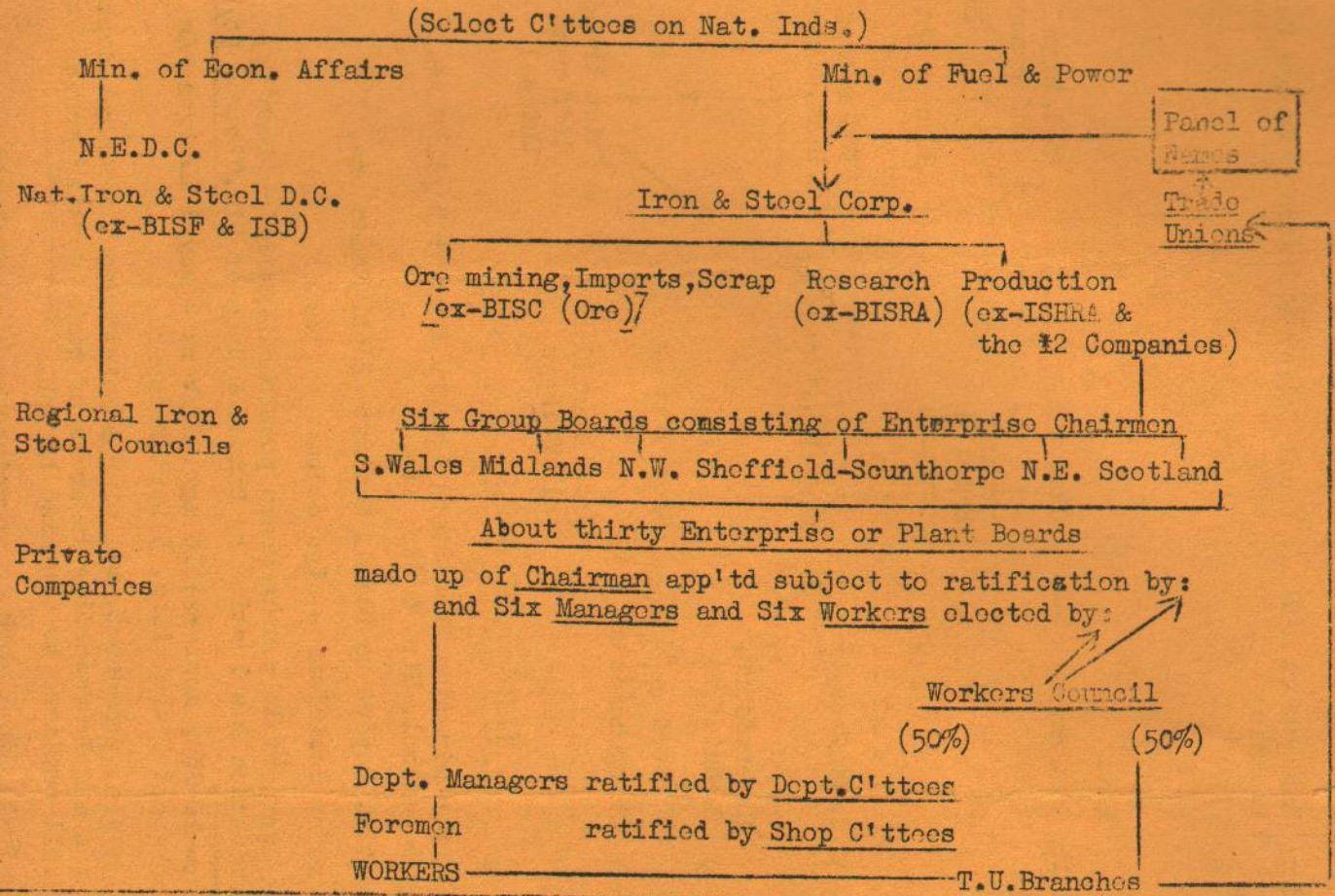


STEEL INDUSTRY STRUCTURE

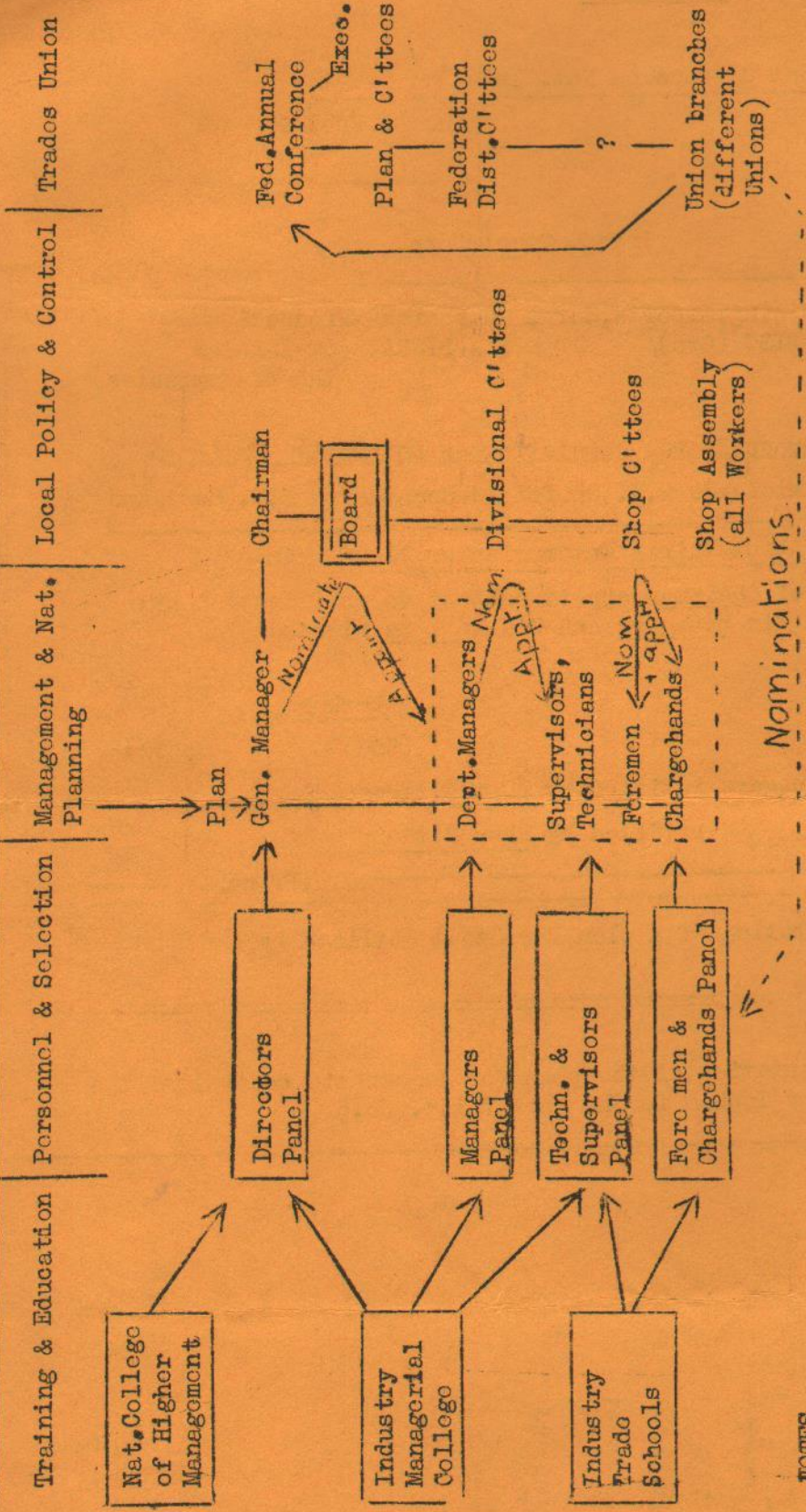
PARLIAMENT



This is a diagrammatic representation of a plan for Steel outlined by a Student of Steel in The Week Vol.3. No.4.

OVERLEAF is a diagrammatic representation of the plan for democratic control of the Steel Industry as outlined by Tony Topham in The Week Vol.3. No.5.





Nominations

NOTES

- Responsibility of Board :- Appoint G.M. on nomination from State Agency. Appoint Dept. Heads. Local policy & control. Hire & fire etc.
- General Manager :- Day to day administration. Report to Board. Nominate Dept. Heads etc.
- Chairman :- Jointly with G.M. to execute major decisions - sign documents etc.
- Personnel :- Appointments to be made from appropriate panels where possible. Qualifications for panels - educational plus nomination & selection by Unions & Shop or Div. C'ttees 50/50.
- Divisional C'ttees (20 each or pro rata.) :- 10 Shop members; 10 ngt. members - say 2 Chargehands, 2 Foremen, 3 Supervisors and Technicians, 3 Dept. Managers.
- Shop C'ttees :- Includes office, drawing office, transport, building & maintenance, research dept. c'ttees etc. Workers grouped mainly according to areas of work, working groups etc. rather than jobs. Unions will continue to organise by job.
- Union Structure presupposes a Nat. Fed. of all Steel workers organised on a plant basis